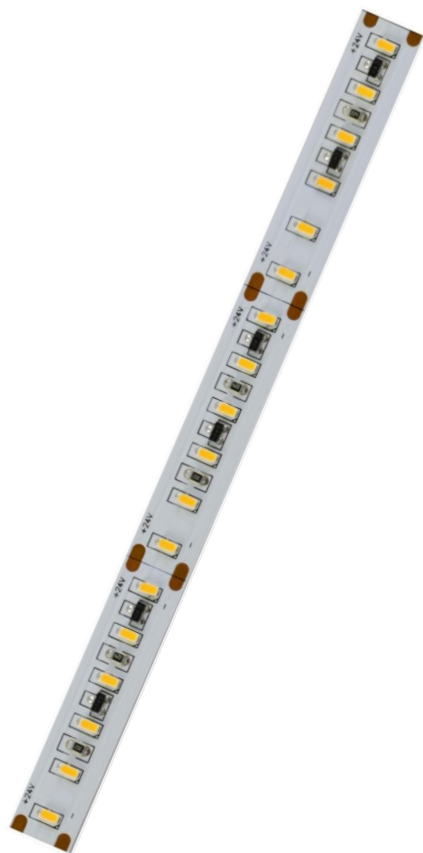


LED Flexible Strip 3014 Series

LM3014-WN60-HL-24V



Product feature

- ◆ 60 leds per meter, 5 meters per roll, the theoretical power 4.8w/meter rating: 24w/5m, light angle 120 degrees. Can be customized according to needed
- ◆ Flexible, cuttable, back with 3M double-sided adhesive, can be installed in the concave convex surface, easy to install.
- ◆ Led strip supports external light regulator type: 0/1-10V PWM Dali Dimmable inductive switch controller
- ◆ Cutting unit is 10cm, 6 led chips can be used as a unit, cutting does not affect other parts. Normal length is 5 meters, other lengths also acceptable.
- ◆ Low power consumption, low fever, no glare, impact resistance, energy saving and environmental conservation.
- ◆ LED can be customized to glue dust (IP65), (IP66), silicone casing plus glue waterproof (IP68);
- ◆ Life time: Mean time between failure (MTBF): 50-100K hour



RoHS



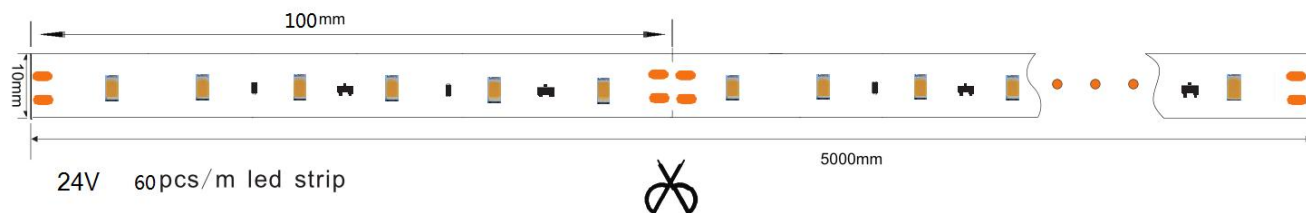
IP
20



Technical parameters

Mode	LED Q'ty/M	Color temperature	CRI(Ra)	Voltage (V DC)	Electric current (A/m)	Power $\pm 10\%$ (W/m)	FPC Width
LM3014-WN60-HL-24V	60	2200-6500K	80+	24	0.2	4.8W/m	10mm

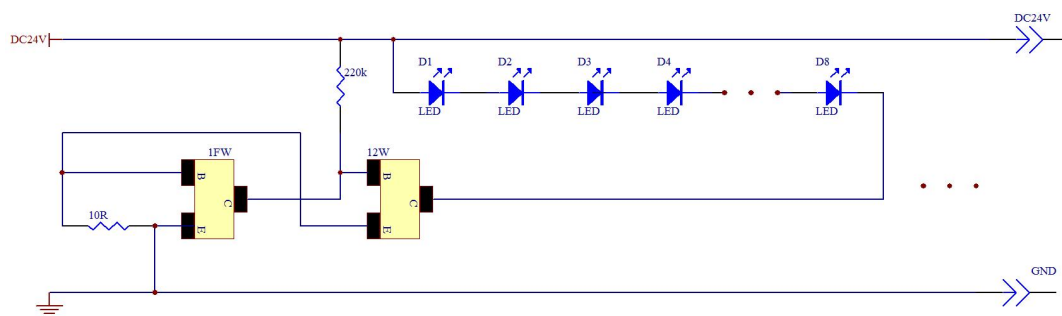
Dimension(mm/inch)



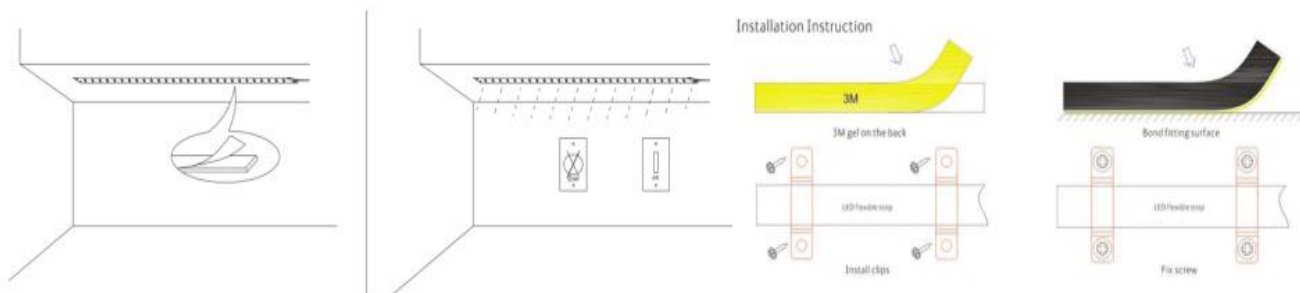
Linking Operation



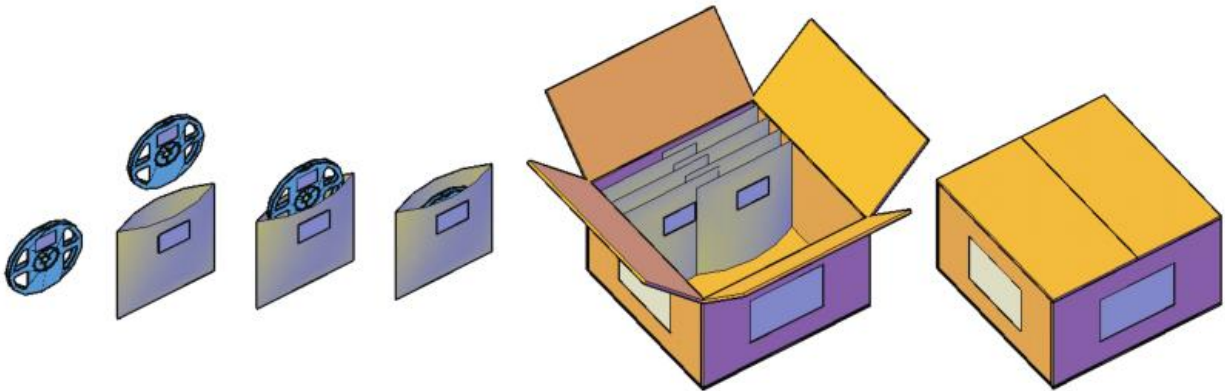
Product electrical drawing



Installation



Product packaging



Safety Information

- The strip itself and all its components may not be mechanically stressed.
 - Assembly must not damage or destroy conducting paths on the circuit board.
 - Installation of LED ribbon (with power supplies) needs to be made with regard to all applicable electrical and safety standards. Only qualified personnel should be allowed to perform installations.
 - Correct electrical polarity needs to be observed. Wrong polarity may destroy the strip.
 - Parallel connection is highly recommended as safe electrical operation mode.
 - Serial connection is not recommended. Unbalanced voltage drop can cause hazardous overload and damage the strip.
 - Please ensure that the power supply is of adapters power to operate the total load.
 - When mounting on metallic or otherwise conductive surfaces, there needs to be an electrical isolation points between strip and the mounting surface.
 - Pay attention to standard ESD precautions when installing the strip.
 - Damaged by corrosion will not be honored as a materials defect claim. It is the user's responsibility to provide suitable protection against corrosive agents such as moisture and condensation and other harmful elements.
-