



# LED Flexible Strip 3014 Series LM3014-WN140-24V



## Product feature

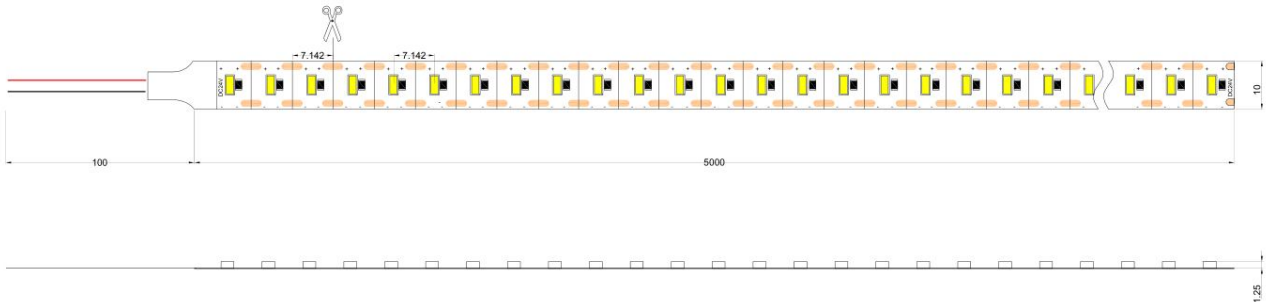
- ◆ The 5 meters a roll of double color, every 140 meters lamp, the theoretical power per meter 17W ,Power rating:70W/5M , angle light 120 degrees. 13-15lm of each light bead can be customized according to needed.
- ◆ curved, soft, soft and compact, 1 lamp unit 1, the length of the cutting installation more economical, convenient,back with 3M double-sided adhesive can be installed in the concave convex surface, easy to install.
- ◆ Lamp strip supports external light regulator type: 0/1-10V PWM Dali Dimmable inductive switch controller.
- ◆ each 0.7cm , one beads can be used as a unit of shear, cut does not affect other parts. 5 meters in length can be adjusted according to production requirements.
- ◆ low power consumption, low fever, no glare, impact resistance, energy saving and environmental protection.
- ◆ can be customized to glue dust (IP65), (IP66), silicone casing waterproof glue waterproof (IP68);
- ◆ LED Life time: Mean time between failure(MTBF):50-100K hour



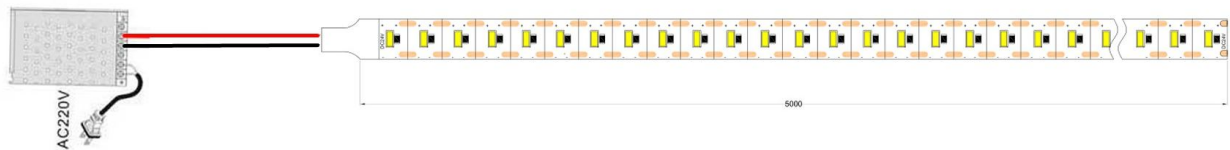
## Technical parameters

Mode	LED Q'ty/M	Color	CCT/Chromaticity	Lumen/led (9V30mA)	CRI(Ra)	Voltage (V DC)	Electric current (A/m)	Power±10%(W/m)	Lm/m ±10%	FPCWidth /thickness
LM3014-WN-140-24V	3014SMD 140PCS/M	Natural White	4000-4200K	34-40lm	75	24V	0.7A	17W/m	940LM	10mm 2Ounce
		White	6000-6500K							
		warm white	3000-3200K							

## Dimension(mm/inch)

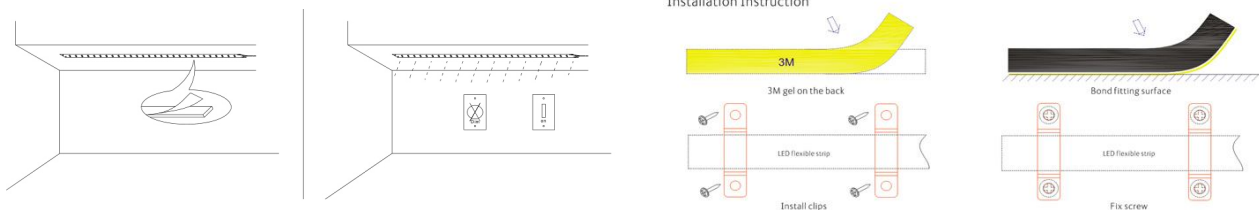


## Linking operation

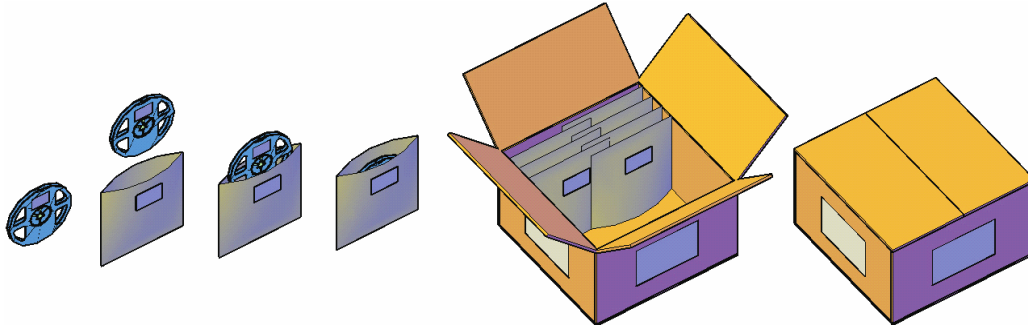


Notes: In order to better achieve product luminous effect, each 5 meters long lamp with power supply cable (regional), suggest that are connected to the power line

## installation



## Product packaging



## Safety Information

- The strip itself and all its components may not be mechanically stressed.
  - Assembly must not damage or destroy conducting paths on the circuit board.
  - Installation of LED ribbon (with power supplies) needs to be made with regard to all applicable electrical and safety standards. Only qualified personnel should be allowed to perform installations.
  - Correct electrical polarity needs to be observed. Wrong polarity may destroy the strip.
  - Parallel connection is highly recommended as safe electrical operation mode.
  - Serial connection is not recommended. Unbalanced voltage drop can cause hazardous overload and damage the strip.
  - Please ensure that the power supply is of adapters power to operate the total load.
  - When mounting on metallic or otherwise conductive surfaces, there needs to be an electrical isolation points between strip and the mounting surface.
  - Pay attention to standard ESD precautions when installing the strip.
  - Damaged by corrosion will not be honored as a materials defect claim.
- It is the user's responsibility to provide suitable protection against corrosive agents such as moisture and condensation and other harmful elements.